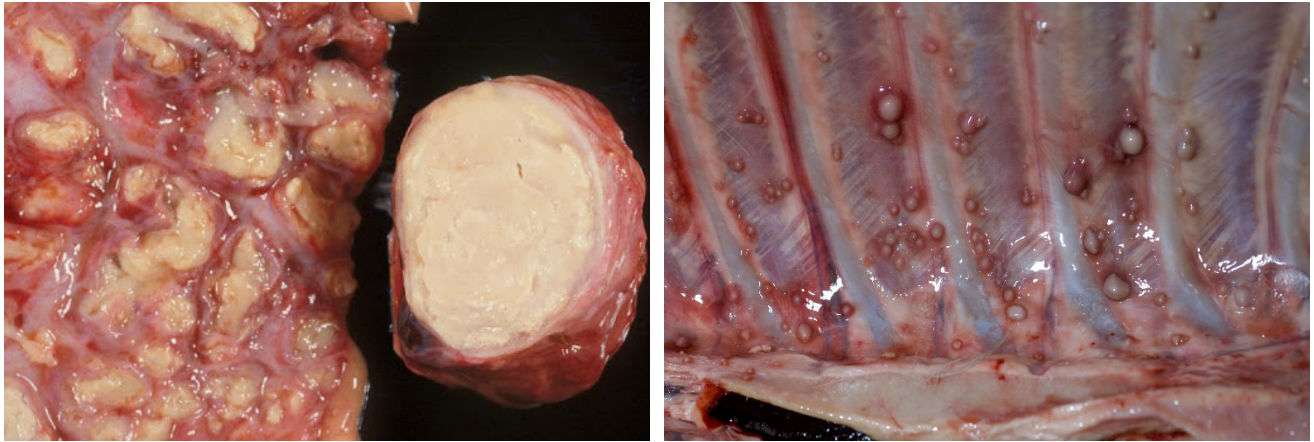


## BOVINE TUBERCULOSIS



Bovine TB is caused by the bacteria *Mycobacterium bovis*, which is closely related to the bacteria which causes TB in humans. Bovine TB is a chronic disease which causes coughing, weight loss and eventual death.

**Bovine TB is a notifiable disease in Namibia, meaning that the detection or suspicion of TB in any animal must be reported to the State Veterinary Services immediately.**

TB spreads between animals through direct contact, and can spread to humans through the consumption of unpasteurized milk or the inhalation of infectious droplets.

The occurrence of any or a combination of the following clinical signs must be reported to the State Veterinarian immediately:

- Progressive loss of condition, stunted growth, dull hair-coat
- Enlarged lymph nodes
- Chronic moist cough which is worse in the morning, difficulty breathing
- Reproductive disorders like recurrent abortions and muco-purulent vaginal discharge
- Intermittent diarrhoea

- On post mortem: granulomatous lung lesions (sometimes extending to the pleura), granulomatous lesions in intestines or any other organ (sometimes widely spread), granulomatous lesions in the udder. Granulomas can look like white spots or bubbles. (See pictures above)

All producers are reminded to report any of the abovementioned symptoms in live animals or carcasses of livestock or game to the nearest State Veterinarian immediately.

Documents related to the control and status of Bovine tuberculosis in Namibia:

[Annex 3 - Animal Health Act 1 of 2011.pdf](#)

[Annex 4 - GN100 Commencement of AHA 1-2011.pdf](#)

[Annex 5 - GN 144 Animal Health Regulations - AHA 1-2011.pdf](#)

[Annex 6 - GN 177-180 Declarations - AHA 1-2011.pdf](#)

[Annex 7 - Animal Diseases n Parasites Act Compendium.pdf](#)

[Annex 8 - Standing Regulations Compendium.pdf](#)

[Annex 9 - Namibian bTB risk assessment.pdf](#)

[Annex 13 - Namibia BTB Surveillance Protocol.pdf](#)

[Annex 14 - Meat Safety Act Regulations - Red Meat.pdf](#)

[Annex 15 - Red Meat Manual South Africa.pdf](#)

[Annex 16 - Meat Safety Act SA.pdf](#)

[Annex 17 - Protocol for bovine tuberculosis testing.pdf](#)

[Annex 18 - Surveillance Protocol for Bovine TB-FMD-Brucellosis-Corridor disease in buffalo at WPP.pdf](#)

[Annex 19 - SA BNS Cattle Import Model Permit.pdf](#)

[Annex 21 - Training on bTB Testing and Freedom Protocol.pdf](#)

[Annex 22 - Import Permit for Cattle from RSA.pdf](#)

[Annex 24 - Model Import Permit Bovine from Botswana.pdf](#)

[Annex 25 - Import Permit Cattle for direct slaughter from SA to Namibia.pdf](#)

[Annex 26 - South Africa bTB Schme Manual 2013.pdf](#)

[Annex 27 - Circular 17-1998 - Branding of Cattle.pdf](#)

[Annex 28 - Circular V23-2002 - Register of Imported Animals.pdf](#)

[Annex 29 - Circular V4-2004 - Tracing of Imported Animals.pdf](#)

[Annex 30 - Animal iD Regulations 2017.pdf](#)

[Annex 31 - Circular 9A NA-RSA Revised Agreement.pdf](#)

[Annex 32 - Circular 9B Revised NA-RSA Agreement.pdf](#)

[Annex 33 - Circular 9-1997 Revised Import Requirements.pdf](#)

[Annex 34 - Tuberculosis - Integrated Disease Surveillance Manual Extract.pdf](#)

[Annex 35 - Circular V12-2010 - National Strategy for Animal Disease Surveillance in Namibia.pdf](#)

[Annex 37 - Circular V24-2004 - Diagnosis of Notifiable Important Diseases.pdf](#)

[Annex 38 - Veterinary Services in Namibia.pdf](#)

[Annex 39 - Circular 27 - Evaluation of Implementation Areas.pdf](#)

[Annex 40 - Namibia self-declared freedom from Bovine tuberculosis FINAL.pdf](#)